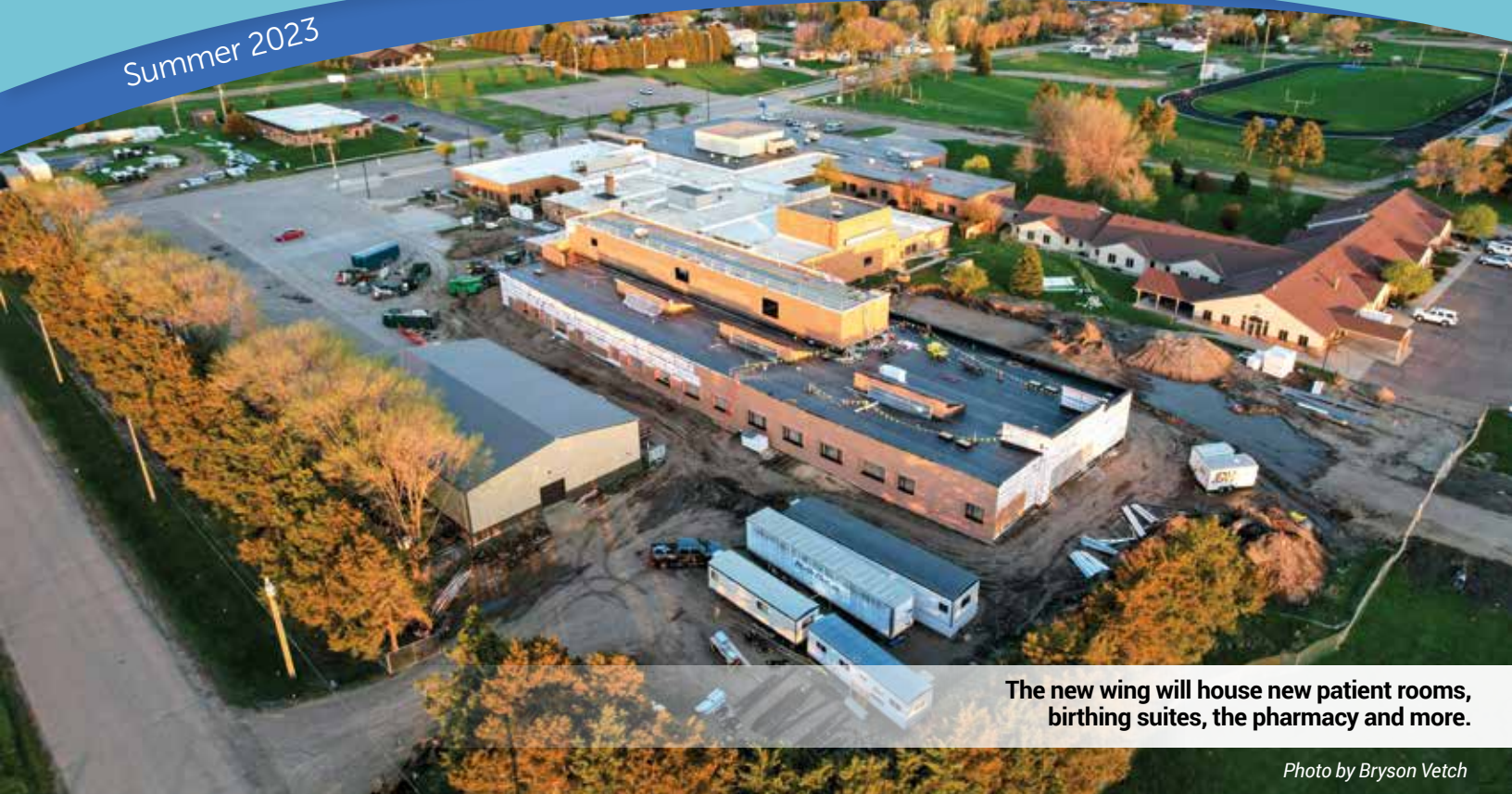


Summer 2023



The new wing will house new patient rooms, birthing suites, the pharmacy and more.

Photo by Bryson Vetch

New Hospital Wing Built and Getting Interior Finishes

If you haven't been on the Mobridge Regional Hospital campus lately, you're in for a surprise.



Mobridge Regional Hospital has been named one of the best hospitals in the country! Read about it on page 2.

On the northwest corner of the existing facility, a 30,000-square foot addition is now in place. The walls are up, the roof is on, the windows are in, and inside, walls are framed, and electrical, plumbing, HVAC and more are being installed.

When it is complete and ready to open by midwinter or early spring, the wing will house new patient rooms, birthing suites, and the pharmacy and infusion center.

"It's so fun to go out there and see the progress they've made from week to week," said Dena Hanson, an RN and MRH&C Chief Nursing Officer.

continued on page 3



John Ayoub, CEO

Letter from John

Every day I am filled with a sense of awe and wonder at the incredible work done by the extraordinary women and men of the Mobridge Regional Hospital & Clinics team. It is a profound honor to work with such a remarkable group of dedicated professionals. I wish you could see what I see on a daily basis: talented and committed individuals who give so much of themselves for the betterment of those they serve.

Individuals coming together, working seamlessly as a team, understanding the profound importance of the lifesaving work they do or supporting those who do it. Regardless of their physical location or the role they play on the team, they are all difference-makers. Of all the Critical Access Hospitals across the country—more than 1,350 of them—our local team is among the Top 20!

There is an incredible sense of pride in witnessing this firsthand. I hope you can share that pride with us. As we move forward with our building and renovation project, we are unlocking additional opportunities and endless possibilities for a healthier future for our unique and amazing region. The team is constantly seeking to improve, creating a better care system in which high quality is paramount but compassion and service are no less important. This team reflects our core values and is constantly working to leave a legacy for the people of our community and future generations. You and your families are a significant part of what we do and the only reason we do it. Thank you for putting your trust in the team of Mobridge Regional Hospital & Clinics.

John J. Ayoub, FACHE, Chief Executive Officer
Mobridge Regional Hospital & Clinics

Mobridge Regional Hospital
1401 10th Avenue West
Mobridge, SD
605-845-3692

Mobridge Medical Clinic
1309 10th Avenue West
Mobridge, SD
605-845-3692

Prairie Sunset Village – Assisted
Living and Senior Housing
1320 West Grand Crossing
Mobridge, SD
605-845-8193

Walworth Co. Community Health
& Visiting Nurse Service
111 2nd St. East
Mobridge, SD
605-845-8127

Selby Medical Clinic
4401 Main St
Selby, SD
605-649-9999

West Dakota Health Center
906 Main Street
Timber Lake, SD
605-865-3258 (MT)

West River Health Clinic
103 1st Avenue East
McLaughlin, SD
605-823-4253 (MT)

WE'RE A TOP 20 HOSPITAL!

MOBRIDGE REGIONAL HOSPITAL AMONG BEST IN COUNTRY

We're so proud to announce that the National Rural Health Association, in conjunction with the Chartis Center for Rural Health, recently named Mobridge Regional Hospital one of the Top 20 Critical Access Hospitals in the country.

A Critical Access Hospital, or CAH, is a healthcare center that offers essential services to rural communities. According to the Centers for Medicare and Medicaid Services, CAHs provide 24-hour emergency care and have 25 or fewer patient beds, among other criteria. There are nearly 1,400 CAHs across the United States.

In choosing the Top 20 CAHs, the Chartis Center looks at care quality, outcomes, patient feedback, costs, charges, finances and more.

"I'm so proud of the phenomenal team we have working at MRH&C," said John J. Ayoub, CEO. "We strive every day to achieve excellence for the betterment of our organization and continued support of our patients and community. This Top 20 award means our community can count on us to deliver the services they need now and in the future."

Mobridge Regional Hospital has been among Chartis's top 100 CAHs for the past three years but only this year entered the ranks of the top 20. MRH&C serves more than 20,000 people in the five-county area and employs 215 dedicated professionals.

A mock patient room has been set up to help nurses, administration and the builders ensure everything is placed for optimal patient care and staff efficiency. From the bed to the patient lift system to the built-in equipment to the handwash sink, glove dispensers, outlets and more, everything is being located with a great deal of thought and team discussion.

“I’m impressed that nursing staff has been asked for so much input,” said Kayla Wolff, an RN and Nurse Manager. “Together we’re ensuring that everything is situated to help us provide the best possible care.”



The switchgear is the electrical power system that runs the hospital. It's the brains of our 30-circuit electrical system. It took 22 long months for our new switchgear to arrive, but it's finally here, and we're now getting the entire electrical system updated and switched over.

“Because of supply-chain issues, we got off to a slow start,” said Ritchie Davis, Environmental Services Director and the MRH&C staff member who works with the contractor, Kraus-Anderson, to coordinate construction, “but it’s really started to pick up, and we’re making up for lost time wherever we can.”

“I feel really good about where we are with our construction project today,” said John J. Ayoub, CEO of MRH&C. “The new building is up, and it looks great. We hope our community is really proud.”



From concrete workers and bricklayers to framers, carpenters, HVAC experts, electrical professionals, plumbers, window installers, roofers and more, well over 100 tradespeople will have contributed their expertise to making our reconstructed hospital a reality.



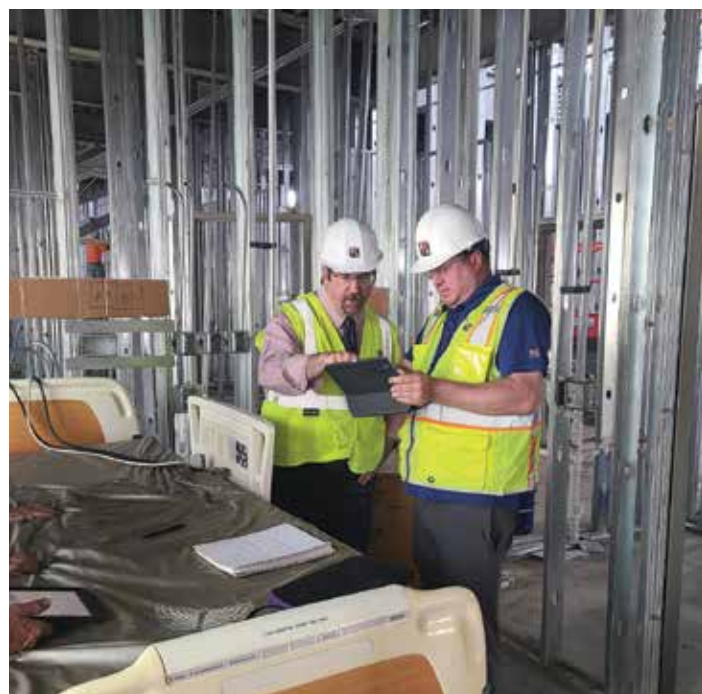
A new ambulance garage is being built next to the new addition.

What to Expect This Fall and Winter

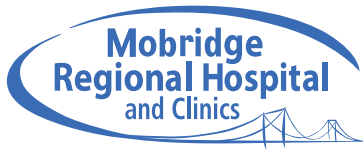
The interior of the new wing will be finished throughout the fall and early winter. When the space is ready, the new patient rooms, birthing suites and pharmacy will open, with the new infusion center following shortly after.

Then Phase 2 of the project will begin. In Phase 2, the Surgical Services suite in the existing building will be revamped, and a new OR will be built where the koi pond and courtyard used to be. Other areas to be rebuilt in Phase 2 include the kitchen and chapel.

“I’ve been involved in this project for over two years now,” said Dan May, Kraus-Anderson’s on-site Project Manager. “It’s amazing to see things you worked with for a long time on paper come to life. The hospital and clinic staff have been fantastic to work with. I cannot say enough positive things about this team and administration.”



A mock patient room has been set up to help our team plan the placement of items in the room for optimal care and efficiency.



PRSRT STD
US Postage
PAID
Mobridge, SD
Permit No. 47

*****ECRWSEDDM****

Residential Customer

UPCOMING EVENTS & CLASSES



Fall Blood Drive
Tuesday, September 12
12:30 - 6 p.m. • Family Worship Center

Healthcare Provider CPR Class
August 7, September 11, October 2
1 - 3 p.m. • MRH&C Education Center

Heartsavers CPR & AED Class
August 14, September 18, October 16
1 - 4 p.m. • MRH&C Education Center
Call 605-845-8163 to register.

Senior Yoga
Mondays and Thursdays
10:30 - 11:00 a.m.

Senior Strength & Balance for Life
Tuesdays and Fridays
10:30 - 11:15 a.m.

Classes are held at Mobridge Senior Citizen Center. Class times and schedule are subject to change.

Mission
The mission of Mobridge Regional Hospital & Clinics is to provide high-quality healthcare services in a compassionate and professional manner for people throughout the region.

Vision
Become one of America's finest rural healthcare providers.

Values
Integrity
Compassion
Collaboration

Excellence

www.mobridgehospital.org www.facebook.com/MobridgeRegionalHospital

Mobridge Regional Hospital & Clinics does not exclude, deny benefits to, or otherwise discriminate against any person on the basis of race, religion, color, national origin, gender, sexual orientation, age, military status, disability, genetic information, ability to pay, or on any other basis that would be in violation of any applicable federal, state, or local law. For a full non-discrimination statement, visit: mobridgehospital.org/patients-and-visitors/pay-a-bill/non-discrimination-and-privacy-policy.